

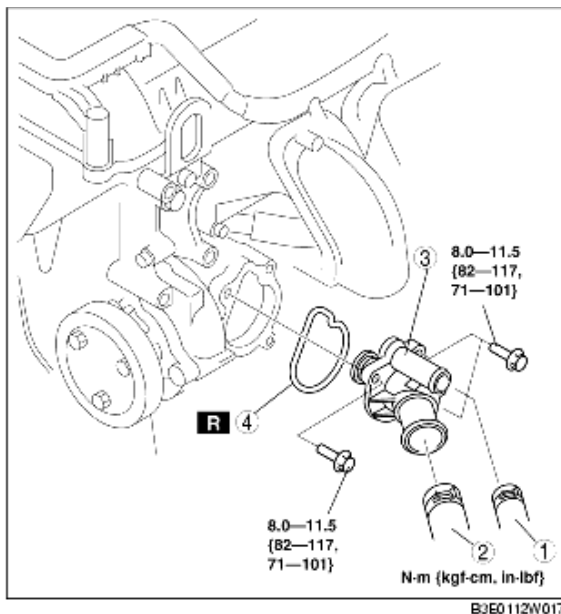
THERMOSTAT REMOVAL/INSTALLATION [LF]

B3E011215171W02

Warning

- Remove and install all parts when the engine is cold, otherwise they can cause severe burns or serious injury.

1. Remove the battery cover. (See [BATTERY REMOVAL/INSTALLATION \[LF\]](#).)
2. Disconnect the negative battery cable.
3. Remove the under cover and splash shield as a single unit.
4. Drain the engine coolant. (See [ENGINE COOLANT REPLACEMENT](#).)
5. Set the coolant reserve tank out of the way.
6. Remove the plug hole plate. (See [PLUG HOLE PLATE REMOVAL/INSTALLATION \[LF\]](#).)
7. Set the drive belt out of the way. (See [DRIVE BELT REPLACEMENT \[LF\]](#).)
8. Remove the drive belt tensioner. (See [TIMING CHAIN REMOVAL/INSTALLATION \[LF\]](#).)
9. Remove in the order indicated in the table.
10. Install in the reverse order of removal.
11. Add engine coolant. (See [ENGINE COOLANT REPLACEMENT](#).)
12. Inspect for the engine coolant leakage. (See [ENGINE COOLANT LEAKAGE INSPECTION](#).)



1	Heater hose
2	Lower radiator hose
3	Thermostat component
4	Gasket